

CORRECTION

Open Access



Correction: Correlation between ovarian follicular development and Hippo pathway in polycystic ovary syndrome

Zichao Huang^{1,2†}, Tianyue Xu^{1,2†}, Chunling Liu³, Honghui Wu^{1,4}, Linglin Weng^{1,2}, Jieyu Cai^{1,2}, Na Liang^{1,4} and Hongshan Ge^{1,2,4*}

Correction: J Ovarian Res 17, 14 (2024)

<https://doi.org/10.1186/s13048-023-01305-z>

Following publication of the original article [1], the author reported that the internal parameter ACTIN corresponding to AMH in Fig. 2 and the internal parameter ACTIN corresponding to YAP and P-YAP in Fig. 5 have been reused.

[†]Zichao Huang and Tianyue Xu contributed equally to this work and are joint first authors.

The online version of the original article can be found at <https://doi.org/10.1186/s13048-023-01305-z>.

*Correspondence:

Hongshan Ge

hongshange@njmu.edu.cn

¹Graduate School, Nanjing University of Chinese Medicine, Nanjing, China

²Reproduction Medicine Centre, The Affiliated Taizhou People's Hospital of Nanjing Medical University, Taizhou, China

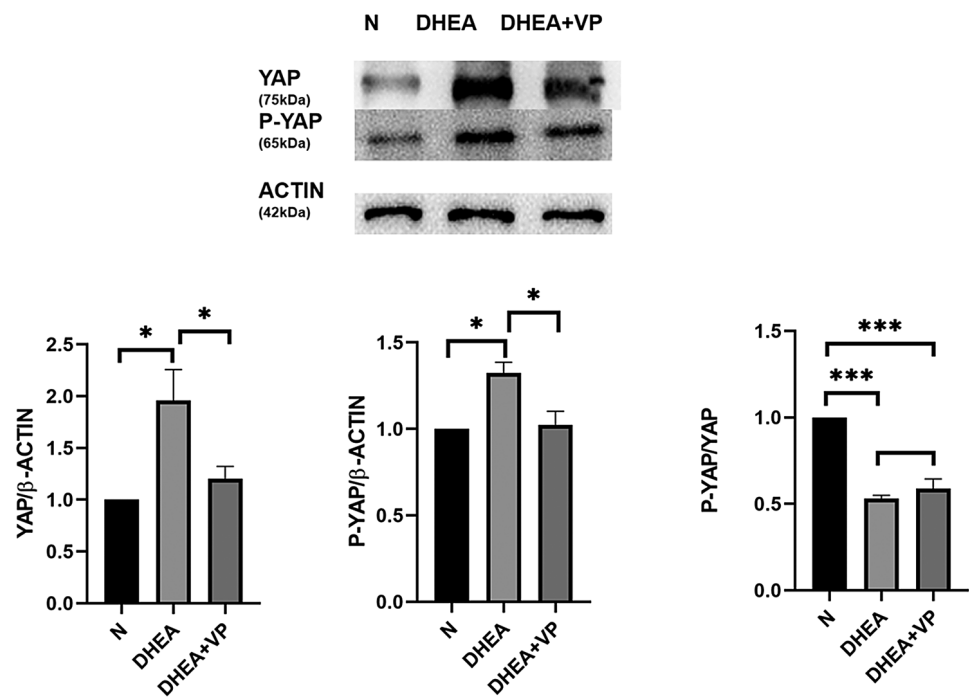
³Center for Reproductive Medicine, the Second Affiliated Hospital of Soochow University, Suzhou, Jiangsu 215004, China

⁴Graduate School, Dalian Medical University, Liaoning, China

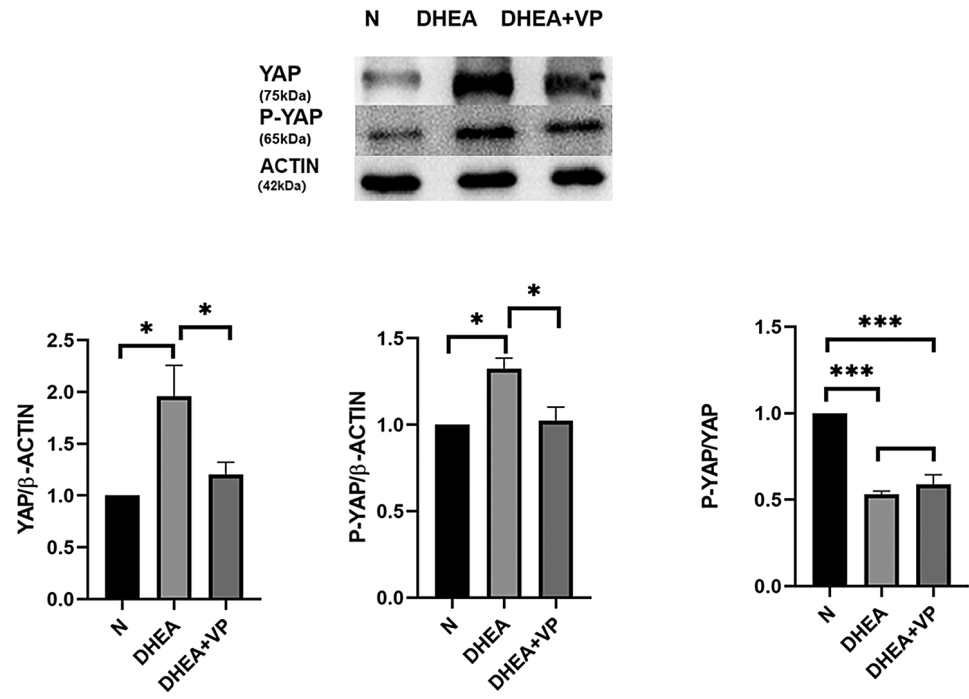


© The Author(s) 2024. **Open Access** This article is licensed under a Creative Commons Attribution 4.0 International License, which permits use, sharing, adaptation, distribution and reproduction in any medium or format, as long as you give appropriate credit to the original author(s) and the source, provide a link to the Creative Commons licence, and indicate if changes were made. The images or other third party material in this article are included in the article's Creative Commons licence, unless indicated otherwise in a credit line to the material. If material is not included in the article's Creative Commons licence and your intended use is not permitted by statutory regulation or exceeds the permitted use, you will need to obtain permission directly from the copyright holder. To view a copy of this licence, visit <http://creativecommons.org/licenses/by/4.0/>. The Creative Commons Public Domain Dedication waiver (<http://creativecommons.org/publicdomain/zero/1.0/>) applies to the data made available in this article, unless otherwise stated in a credit line to the data.

Incorrect figure



Correct figure 5



The original article [1] has been corrected.

Published online: 20 November 2024

Publisher's note

Springer Nature remains neutral with regard to jurisdictional claims in published maps and institutional affiliations.

References

1. Huang Z, Xu T, Liu C, et al. Correlation between ovarian follicular development and Hippo pathway in polycystic ovary syndrome. *J Ovarian Res.* 2024;17:14. <https://doi.org/10.1186/s13048-023-01305-z>.